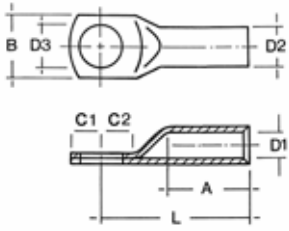


Cu - Presskabelschuhe nach DIN

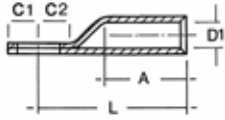
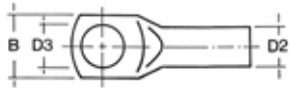


Merkmale:

- Gesamtquerschnitt 6 – 1.000 mm² nach DIN 46235 und ähnliche Ausführungen, nicht genormt*
- Material E-Cu gemäß EN 13600
- Oberfläche, galvanisch verzinkt
- Kabelschuhe mit Pressmarkierung zur Angabe der jeweiligen Verpressungsanzahl (schmal/breit)
- für Rundleiter gemäß VDE 0295 Klasse 1,2 5 & 6, sowie rundgedrückte mehrdrähtige Sektorleiter
- auf Wunsch auch in blanker Ausführung (Zusatz „-BK“) lieferbar

Quer- schnitt mm ²	Artikel- Nummer	Boh- rung	Kenn- ziffer	D1 mm	D2 mm	D3 mm	A mm	B mm	C1 mm	C2 mm	L mm	Ge- wicht kg/100	VE Stck.
6	P 6-5	M5	5	3,8	5,5	5,3	10	8,5	6,5	7,5	24	0,24	100
	P 6-6	M6	5	3,8	5,5	6,4	10	8,5	7,5	8,0	24	0,30	100
	P 6-8*	M8	5	3,8	5,5	8,4	10	8,5	10,0	10,0	24	0,34	100
10	P 10-5	M5	6	4,5	6,0	5,3	10	9,0	7,0	8,5	27	0,37	100
	P 10-6	M6	6	4,5	6,0	6,4	10	9,0	7,5	8,5	27	0,36	100
	P 10-8*	M8	6	4,5	6,0	8,4	10	9,0	10,0	10,0	27	0,38	100
16	P 16-6	M6	8	5,5	8,5	6,4	20	13,0	7,5	8,0	36	1,19	100
	P 16-8	M8	8	5,5	8,5	8,4	20	13,0	10,0	10,0	36	1,22	100
	P 16-10	M10	8	5,5	8,5	10,5	20	17,0	12,0	12,0	36	1,30	100
	P 16-12*	M12	8	5,5	8,5	13,0	20	18,0	13,0	13,0	36	1,27	100
25	P 25-6	M6	10	7,0	10,0	6,4	20	14,0	7,5	8,0	38	1,51	1
	P 25-8	M8	10	7,0	10,0	8,4	20	16,0	10,0	10,0	38	1,54	1
	P 25-10	M10	10	7,0	10,0	10,5	20	17,0	12,0	12,0	38	1,62	1
	P 25-12	M12	10	7,0	10,0	13,0	20	19,0	13,0	13,0	38	1,66	1
35	P 35-6*	M6	12	8,2	12,5	6,4	20	17,0	7,5	8,0	42	2,77	1
	P 35-8	M8	12	8,2	12,5	8,4	20	17,0	10,0	10,0	42	2,85	1
	P 35-10	M10	12	8,2	12,5	10,5	20	19,0	12,0	12,0	42	2,84	1
	P 35-12	M12	12	8,2	12,5	13,0	20	21,0	13,0	13,0	42	2,79	1
	P 35-14*	M14	12	8,2	12,5	15,0	20	21,0	14,5	14,5	42	2,70	1
50	P 50-8	M8	14	10,0	14,5	8,4	28	20,0	10,0	10,0	52	4,46	1
	P 50-10	M10	14	10,0	14,5	10,5	28	22,0	12,0	12,0	52	4,48	1
	P 50-12	M12	14	10,0	14,5	13,0	28	24,0	13,0	13,0	52	4,40	1
	P 50-14*	M14	14	10,0	14,5	15,0	28	24,0	14,5	14,5	52	4,30	1
	P 50-16	M16	14	10,0	14,5	17,0	28	28,0	16,0	16,0	52	4,57	1
70	P 70-8	M8	16	11,5	16,5	8,4	28	24,0	10,0	10,0	55	5,92	1
	P 70-10	M10	16	11,5	16,5	10,5	28	24,0	12,0	12,0	55	6,02	1
	P 70-12	M12	16	11,5	16,5	13,0	28	24,0	13,0	13,0	55	5,89	1
	P 70-14*	M14	16	11,5	16,5	15,0	28	24,0	14,5	14,5	55	5,80	1
	P 70-16	M16	16	11,5	16,5	17,0	28	30,0	16,0	16,0	55	6,13	1
95	P 95-8	M8	18	13,5	19,0	8,4	35	28,0	12,0	12,0	65	9,21	1
	P 95-10	M10	18	13,5	19,0	10,5	35	28,0	12,0	12,0	65	8,97	1
	P 95-12	M12	18	13,5	19,0	13,0	35	28,0	13,0	13,0	65	8,62	1
	P 95-14*	M14	18	13,5	19,0	15,0	35	28,0	14,5	14,5	65	8,78	1
	P 95-16	M16	18	13,5	19,0	17,0	35	32,0	16,0	16,0	65	9,00	1
120	P 120-10	M10	20	15,5	21,0	10,5	35	32,0	15,0	16,0	70	11,40	1
	P 120-12	M12	20	15,5	21,0	13,0	35	32,0	16,0	17,0	70	11,31	1
	P 120-14*	M14	20	15,5	21,0	15,0	35	32,0	18,0	19,0	70	11,45	1
	P 120-16	M16	20	15,5	21,0	17,0	35	32,0	19,0	20,0	70	11,24	1
	P 120-20	M20	20	15,5	21,0	21,0	35	38,0	21,0	22,0	70	11,03	1

*nicht genormt



Querschnitt mm ²	Artikel- Nummer	Bohr- rung	Kenn- ziffer	D1 mm	D2 mm	D3 mm	A mm	B mm	C1 mm	C2 mm	L mm	Ge- wicht kg/100	VE Stck.
150	P 150-10	M10	22	17,0	23,5	10,5	35	34,0	15,0	16,0	78	16,38	1
	P 150-12	M12	22	17,0	23,5	13,0	35	34,0	16,0	17,0	78	16,29	1
	P 150-14*	M14	22	17,0	23,5	15,0	35	34,0	19,0	20,0	78	16,38	1
	P 150-16	M16	22	17,0	23,5	17,0	35	34,0	19,0	20,0	78	16,17	1
	P 150-20	M20	22	17,0	23,5	21,0	35	40,0	21,0	22,0	78	15,90	1
185	P 185-10	M10	25	19,0	25,5	10,5	40	37,0	15,0	16,0	82	18,96	1
	P 185-12	M12	25	19,0	25,5	13,0	40	37,0	16,0	17,0	82	18,11	1
	P 185-14*	M14	25	19,0	25,5	15,0	40	37,0	19,0	20,0	82	19,21	1
	P 185-16	M16	25	19,0	25,5	17,0	40	37,0	19,0	20,0	82	18,74	1
	P 185-20	M20	25	19,0	25,5	21,0	40	40,0	21,0	22,0	82	18,69	1
240	P 240-12	M12	28	21,5	29,0	13,0	40	42,0	16,0	17,0	92	27,00	1
	P 240-14*	M14	28	21,5	29,0	15,0	40	42,0	19,0	20,0	92	27,58	1
	P 240-16	M16	28	21,5	29,0	17,0	40	42,0	19,0	20,0	92	27,37	1
	P 240-20	M20	28	21,5	29,0	21,0	40	45,0	21,0	22,0	92	26,88	1
300	P 300-14*	M14	32	24,5	32,0	15,0	50	46,0	19,0	22,0	100	33,29	1
	P 300-16	M16	32	24,5	32,0	17,0	50	46,0	19,0	22,0	100	32,94	1
	P 300-20	M20	32	24,5	32,0	21,0	50	46,0	21,0	22,0	100	33,24	1
400	P 400-14*	M14	38	27,5	38,5	15,0	70	54,0	25,0	25,0	110	69,38	1
	P 400-16	M16	38	27,5	38,5	17,0	70	54,0	25,0	25,0	110	68,54	1
	P 400-20	M20	38	27,5	38,5	21,0	70	54,0	25,0	25,0	110	65,40	1
500	P 500-16*	M16	42	31,0	42,0	17,0	70	60,0	25,0	25,0	125	83,31	1
	P 500-20	M20	42	31,0	42,0	21,0	70	60,0	25,0	25,0	125	81,58	1
625	P 625-16*	M16	44	34,5	44,0	17,0	80	64,0	25,0	25,0	135	79,60	1
	P 625-20	M20	44	34,5	44,0	21,0	80	64,0	25,0	25,0	135	79,69	1
800	P 800-16*	M16	52	40,0	52,0	17,0	100	75,0	30,0	30,0	165	150,00	1
	P 800-20	M20	52	40,0	52,0	21,0	100	75,0	30,0	30,0	165	149,00	1
1000	P 1000-16*	M16	58	44,0	58,0	17,0	100	83,0	30,0	30,0	165	199,00	1
	P 1000-20	M20	58	44,0	58,0	21,0	100	83,0	30,0	30,0	165	195,00	1

*nicht genormt