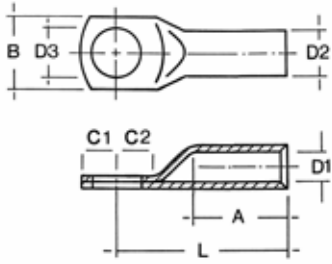


Cu - Rohrkabelschuhe für Schaltgeräte-anschlüsse, schmale Ausführung



Merkmale:

- Gesamtquerschnitt: 35 – 300 mm²
- Material E-Cu gemäß EN 13600
- Oberfläche, galvanisch verzinkt
- für mehrdrähtige Rundleiter und rundgedrückte Sektorleiter gemäß VDE 0295 Klasse 2
- schmaler Flansch, für reduzierten Anschlußbereich

Querschnitt mm ²	Artikel-Nummer	Bohrung	D1 mm	D2 mm	D3 mm	A mm	B mm	C1 mm	C2 mm	L mm	Gewicht kg/100	VE Stck.
35	RS 35-6	M6	8,5	12,0	6,5	17	15	8,0	7,5	33	1,80	25
50	RS 50-8	M8	10,0	14,0	8,5	19	17	10,0	11,0	39	2,72	25
	RS 50-10	M10	10,0	14,0	10,5	19	19	12,0	13,0	41	3,00	25
70	RS 70-8	M8	12,0	16,5	8,5	21	17	10,0	11,5	43	4,20	25
	RS 70-10	M10	12,0	16,5	10,5	21	19	12,0	13,5	45	4,20	25
	RS 70-12	M12	12,0	16,5	13,0	21	19	12,0	14,5	46	4,20	25
95	RS 95-8	M8	13,5	18,0	8,5	23	19	10,0	11,5	45	4,80	10
	RS 95-10	M10	13,5	18,0	10,5	23	19	12,0	13,5	47	5,00	10
	RS 95-12	M12	13,5	18,0	13,0	23	19	12,0	14,5	48	4,90	10
120	RS 120-8	M8	15,0	19,5	8,5	26	20	8,0	9,0	49	6,00	10
	RS 120-10	M10	15,0	19,5	10,5	26	20	12,0	13,0	53	6,00	10
	RS 120-12	M12	15,0	19,5	13,0	26	20	12,0	14,0	54	6,00	10
150	RS 150-8	M8	16,5	21,0	8,5	29	20	10,0	11,0	54	6,50	10
	RS 150-10	M10	16,5	21,0	10,5	29	20	11,5	14,0	56	6,70	10
	RS 150-12	M12	16,5	21,0	13,0	29	20	12,0	14,0	57	7,00	10
185	RS 185-10	M10	19,0	24,0	10,5	30	26	12,0	14,0	60	9,50	10
	RS 185-12	M12	19,0	24,0	13,0	30	26	12,0	14,0	60	9,50	10
	RS 185-16	M16	19,0	24,0	17,0	30	26	16,0	18,0	64	10,00	10
240	RS 240-10	M10	21,0	26,0	10,5	35	30	12,0	14,0	65	11,40	10
	RS 240-12	M12	21,0	26,0	13,0	35	30	12,0	14,0	65	11,50	10
	RS 240-16	M16	21,0	26,0	17,0	35	30	16,0	16,0	69	11,80	10
300	RS 300-10	M10	24,0	30,0	10,5	42	30	12,0	13,0	76	18,50	10
	RS 300-12	M12	24,0	30,0	13,0	42	30	12,0	16,0	79	18,50	10
	RS 300-16	M16	24,0	30,0	17,0	42	30	16,0	18,0	81	18,60	10